

WellMark® Product Summary

Precision Liquid and Gas Management Controls
Improving Your Bottom Line and the Environment

WellMark®
CEMCO MAJOR



WellMark's 60,000 sq. ft. Manufacturing Facility located on 4.5 acres in the Heartland of America, Oklahoma City, OK, USA.



Liquid and Gas Controls For A New Level of Success

Established in 1982, WellMark® began with a single product line. By 1997 they had acquired CEMCO/Major and their product offering grew. Today, WellMark® produces a broad range of liquid and pneumatic controls and valves.

Products include - Hydrostatic Headswitches, Electric Level Controls, Pneumatic Level Controls, ASME Section VIII certified Safety Relief Valves, Pressure-Reducing Regulators, Backpressure Regulators, Chemical Injection Pumps (pneumatic and environmentally-friendly solar powered), Diaphragm-Operated Motor Valves, Throttling & Choke Valves, Mechanical Dump Controls & Valves.

WellMark® continues to lead the way, helping oil and gas producers meet their EPA Natural Gas STAR Program or Kyoto pledge of reducing methane emissions by developing environmentally-conscious alternatives to conventional high-bleed pneumatic control devices.



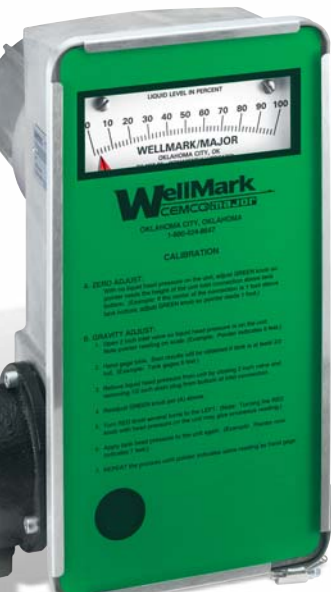
Instrumentation

The WellMark® Instrumentation line includes liquid level switches and controls for use with Oil & Gas production equipment such as tanks, compressor scrubbers, separators, dehydrators and treaters, hazardous waste disposal and other production processes that require precise liquid level control or Hi-Lo level alarm systems. This line also includes the patented WellMark® Low Bleed MIZER® Poppet Valve Retrofit Kits for CEMCO, Invalco, Fisher and other pneumatic level controllers to reduce greenhouse gas emissions while contributing to your bottom line.

Size Range:
1" through 5"

Pressure/Class Range:
0 psi through 6000 psi *

*Consult factory for exact product specifications. Optional end connections are available upon request.



Electric Liquid Level Controls



Series 687 Electric Controls

Series 790
Electric Controls

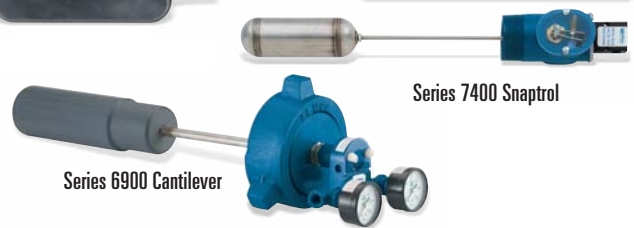


Series 685S
Hydrostatic Head Switch



Pneumatic Liquid Level Controls

Series 2001 NB

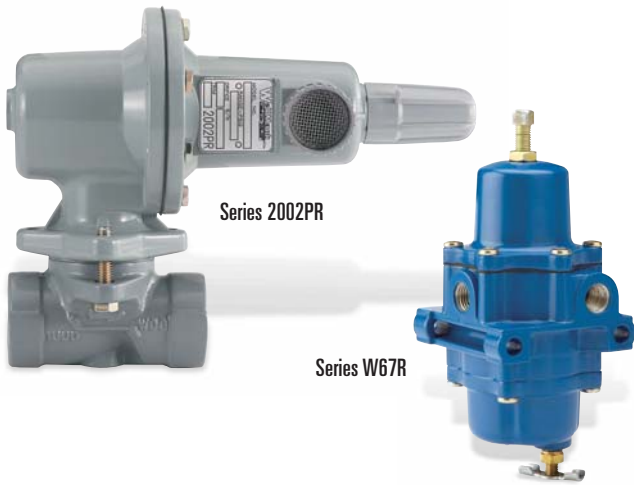


Series 7400 Snaptrol

Series 6900 Cantilever



MIZER® Low Bleed
Poppet Control Valves



Pressure Reducing Regulators

WellMark®'s pressure-reducing regulators are designed for low- and high-pressure systems and can be used with natural gas, air, or other gasses. Used in conjunction with pneumatic liquid level controls and valve positioners, these regulators provide constant and reliably controlled reduced pressures. In addition, they can be used for general-purpose control of gas or air to other pneumatic instruments.

Size Range: 1/4" through 2"
Working Pressure Range: 0 psi through 2000 psi
Output Pressure: 500 psi maximum

Safety Relief Valves

These valves are for general purpose gas and air services, and are recommended for over-pressure protection on separators, compressors, pressure vessels, heater-treaters, gathering and transmission lines, meter runs and other systems where the rated capacities of the valve are commensurate with the requirements of the system.

Size Range:
 1/2" through 3"

Pressure/Class Range:
 10 psi through 2500 psi

Meets requirements of Section VIII of the ASME Boiler and Pressure Vessel Code.



Series 4050V Dump Valve



Series 2020 Choke Valve

Valves

WellMark® offers a variety of quality valves for use as dump valves on high pressure scrubbers, separators and other liquid accumulators, as well as for shut-in valves on plunger lift systems. WellMark® also offers flow control choke valves that are ideal for use in well head control, gas gathering systems, pressure separators, CO₂ and water or steam injection systems. Suitable for water, gas and other liquid service.

Size Range:
 1" through 4"

Pressure/Class Range:
 300 psi through 6000 psi

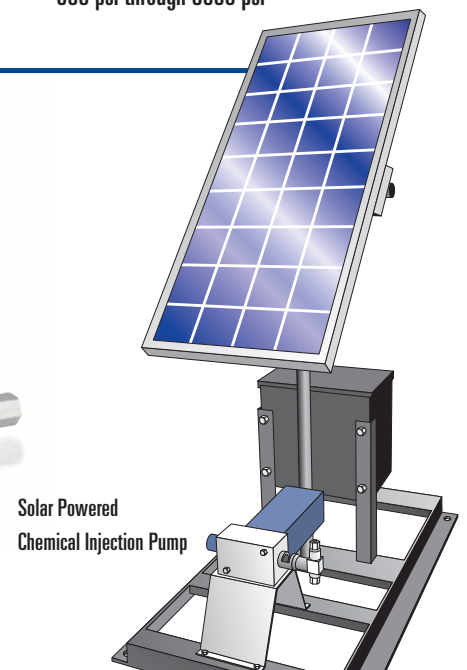
Chemical Injection Pumps

The Pneumatic Chemical Injection Pump and Solar Powered Electric Chemical Pump are positive displacement pumps used to inject chemicals into lines under pressure. Applications include injection of chemical into wellheads, pipelines or batch processing. Examples include injecting: methanol into gas systems, corrosion inhibitors, friction reducers or scale inhibitors into pipelines and other closed systems. The Solar option adds an environmentally-friendly benefit and reduction of operating cost.

Discharge Pressure: CIP • 6500 psi maximum
 Solar • 2500 psi maximum

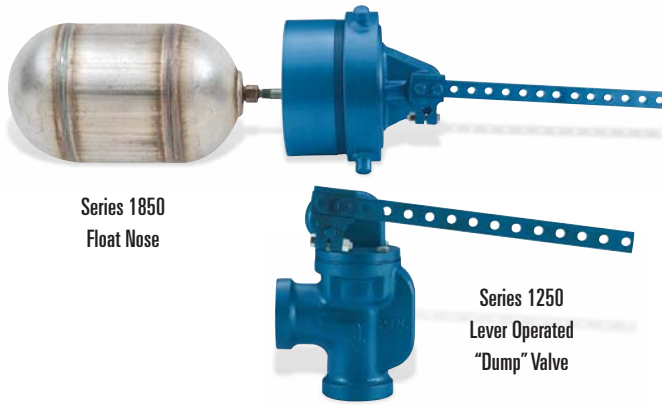


Series CIP
 Chemical Injection Pump



Solar Powered
 Chemical Injection Pump

Mechanically Operated Level Controls & Dump Valves



The WellMark® Float Nose is an inexpensive mechanical lever for use as an oil or water dump control on separators, water knockouts, horizontal emulsion treaters, and other similar accumulators. The WellMark® lever operated "dump" valve is used in conjunction with a float nose to dump oil or water from separators, knockouts, treaters, and other accumulators.

Size: 2"

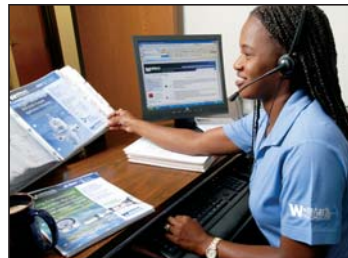
Pressure: 500 psi max

Miscellaneous Products

- **Meter Leveling Saddle** - An accepted means to support chart recorders on meter runs or as an economical means to support pipe runs.
- **Fuel Gas Shut-Off Valve** - For use in fuel gas scrubbers on gas production units, indirect line heaters, heater treaters, etc.
- **In-Service Test Tool** - In-line device installed between a safety relief valve and pressure vessel for in-field testing of pressure settings and/or seat leakage.
- **Probe and Plug Pressure Provers** - For fast, on-location, pressure checks on wellheads, flow lines and pressure vessels
- **Blind Flange Assemblies (Closures) and Weld Necks** - A blank process body, hammer union and weld neck permits easy field installation of a second control on vessels having two or more nozzle openings.

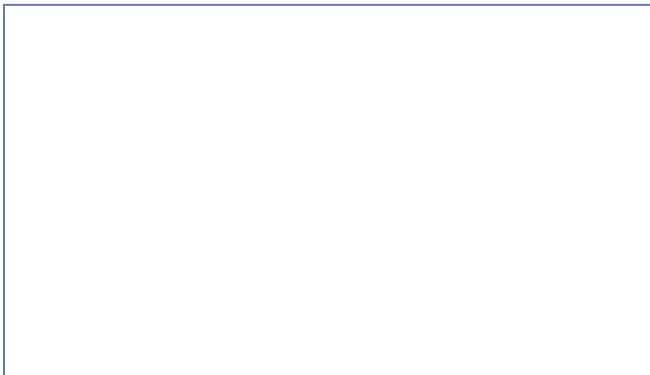


Customer Service... There when you need us.



WellMark®'s engineering and customer service teams are available to serve you. They can assist in specifying your project, coordinating documentation or putting you in touch with a local representative.

Contact WellMark® today for more information about our products and services, or by visiting www.wellmarkco.com.



The **WellMark**® Company, L.L.C.
 1903 S.E. 29th Street • Oklahoma City, OK 73129
 P.O. Box 95459 • Oklahoma City, OK 73143
 Tel: (405) 672-6660 • Fax: (405) 672-6661
 Website: www.wellmarkco.com