

4040 Two-Way Valve, High Pressure "K" Trim

Application

This valve, an industry standard, has long been used for control of liquid, oil, or gas on high pressure applications. Gas production separators, gas scrubbers, or any type liquid accumulators are just a few typical applications for this valve.

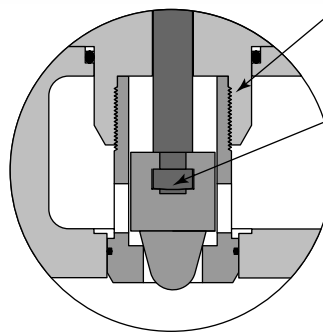
Features

- The industry preferred "K" trim (see figure 1) is a field friendly quick-change design, which allows for positive removal of the seat and easy replacement of the valve trim.
- Multiple Trim Sizes: 1/4", 3/8", 1/2", 3/4", and 1" 17-4 PH H-900 Standard. Carbide Available.
- 1" or 2" Body Size Threaded or Flanged
- Pressed Steel Topworks: #20 or #50
- Visual Indicator Standard
- Bolted or Hammer Union Topworks



Specifications

Size	1" Globe, WCB	2" Globe, WCB	2" T, WCB	2" Y, WCB
Working Pressure	4000 psi	2000 psi	6000 psi	6000 psi
Temperature	-50°F to +250°F Standard (other available)			
Size Topworks	#20 or #50			



Seat cage is threaded to topworks diaphragm support for positive, sure removal from body.

With seat cage removed from diaphragm support, the slide on or off tongue and groove designed plug and stem allows for easy field replacement.

The "K" trim design also results in more positive sealing of plug and seat than most other industry valves, due to the positive self-alignment between the stem, plug and seat cage (No threads to cross or pin holes to align).

Figure 1 Quick-Change Trim

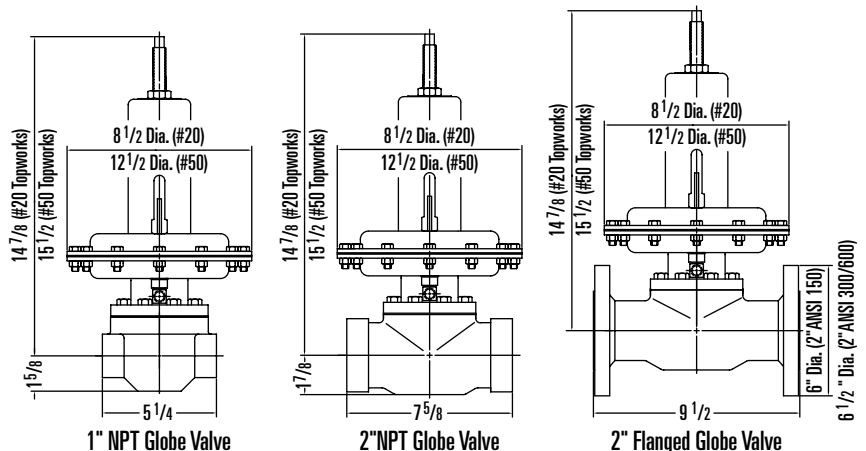
Material

Body

1" Globe	WCB	Bolted Topworks
2" Globe	WCB	Bolted Topworks
2" Globe, Flanged	WCB	Bolted Topworks
2" T	WCB	Hammer Union Topworks
2" Y	WCB	Hammer Union Topworks

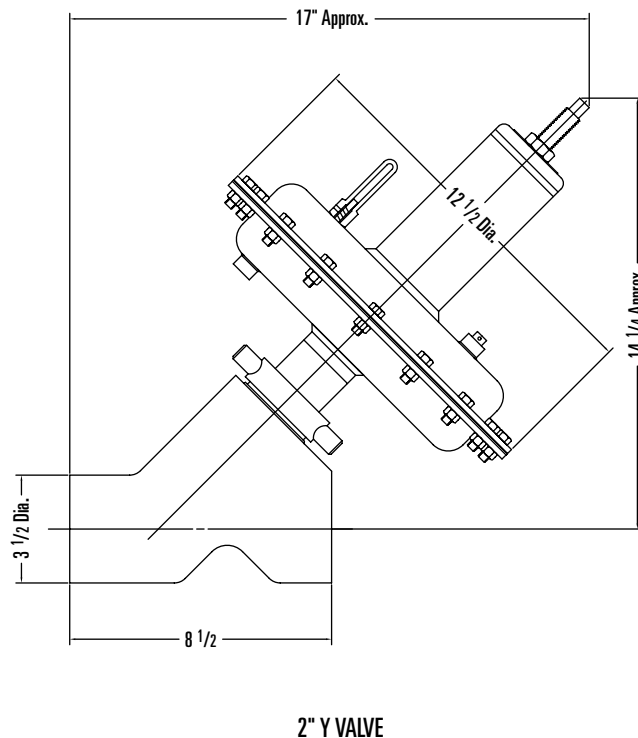
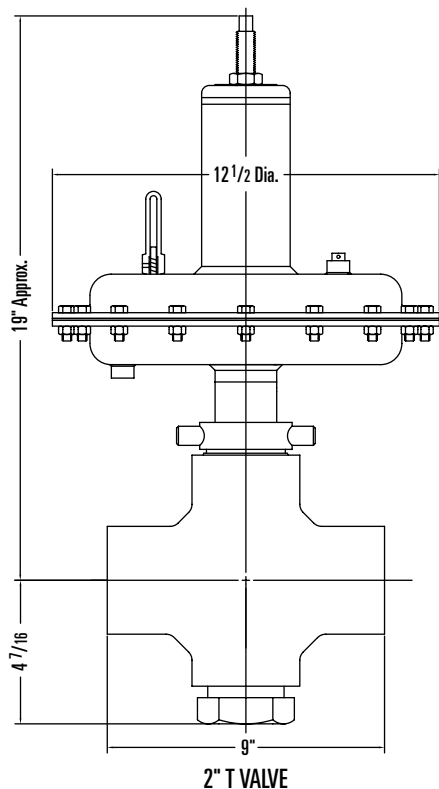
Topworks	Press Steel
Diaphragm	Nylon Reinforced Buna-N (50 psi pressure max.)
Stem	316 SS
Packing	Reinforced Nitrile "W" Standard (other materials available)
Trim	17-4 PH H-900 Standard (Carbide Available)

Dimensional Data (Bolted Topworks)



4040 Two-Way Valve, High Pressure "K" Trim

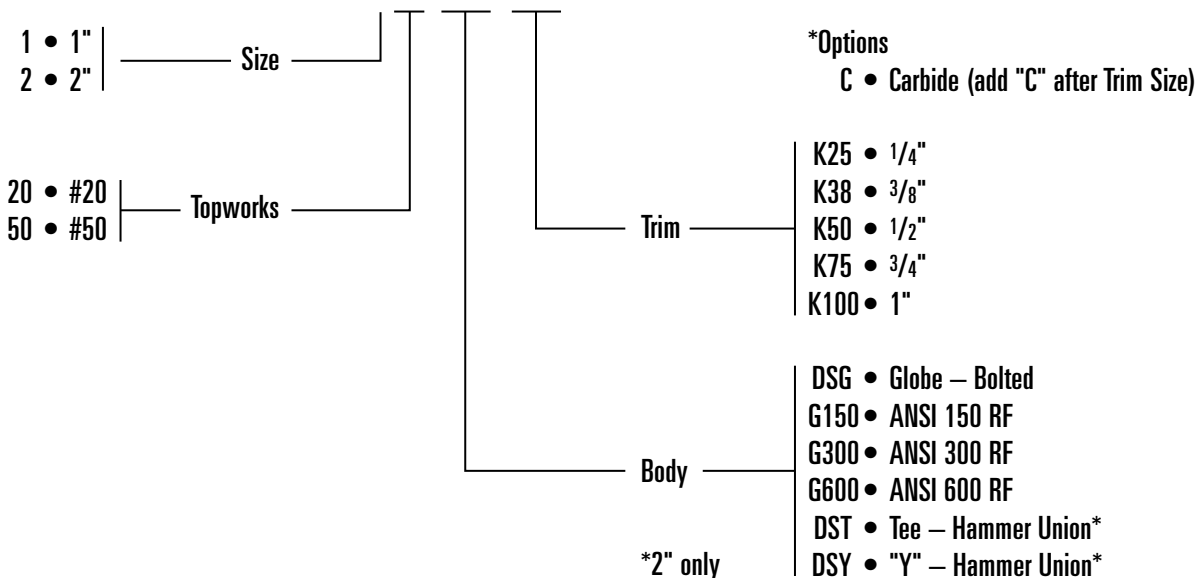
Dimensional Data (Hammer Union Topworks)



Determining the Model Number

Example given: Standard Model 220-DSG-K50 – Series 4040 2" Globe (Bolted), #20 Topworks, 1/2" "K" Trim, Two-Way, High Pressure Valve.

MODEL 220-DSG-K50*



4040 Two-Way Valve, High Pressure "K" Trim

Parts List Series 4040 w/Bolted Topworks

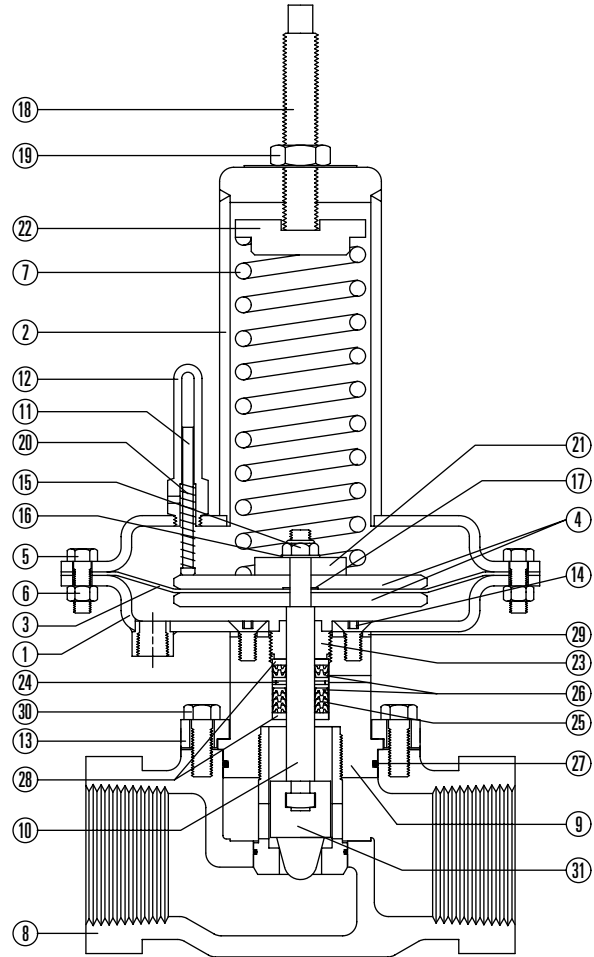
Item	Description	Qty.	Part No.	
			#20 Topworks	#50 Topworks
1	LOWER CASE, PRESS STEEL	1	06500-0572	06500-0309
2	UPPER CASE, PRESS STEEL	1	06500-1042	06500-0051
3	DIAPHRAGM, NYLON REIN. NITRILE •	1	06000-0056	06000-0049
4	DIAPH. PLATE, STEEL	2	05010-1922	05010-0411
5	CAP SCREW, STEEL PLATED	12	05000-1742	
	CAP SCREW, STEEL PLATED	16		05000-1841
6	HEX NUT, STEEL PLATED	12	05000-1726	
	HEX NUT, STEEL PLATED	16		05000-2104
7	SPRING, ASTM A-401	1	05010-7291	05010-5063
8	BODY, 1" NPT, STEEL WCB	1	05010-2904	
	BODY, 2" NPT, STEEL WCB	1	05010-9040	
	BODY, 2" ANSI 150RF, STEEL WCB	1	06500-0960	
	BODY, 2" ANSI 300RF, STEEL WCB	1	06500-0515	
	BODY, 2" ANSI 600RF, STEEL WCB	1	06500-0523	
9	DIA. SUPPORT, STEEL	1	05010-9172	
10	STEM, 316 STAINLESS STEEL	1	05010-9180	
11	INDICATOR PIN, ABS PLASTIC	1	05010-5378	
12	INDICATOR GLASS, POLYCARBONATE	1	06000-4074	
13	FLANGE RING, STEEL	1	05010-8547	
14	SCREW, FLAT HEAD, STAINLESS STEEL	4	05000-1759	
15	NULOC NUT, STEEL PLATED	1	05000-2997	
16	LOCK WASHER, STEEL PLATED	1	06000-0403	
17	THREAD SEAL, BUNA-N •	1	06000-0395	
18	ADJ. SCREW, STEEL	1	05010-3407	
19	JAM NUT, STEEL PLATED	1	05000-2070	
20	SPRING, ASTM A-313	1	05010-2888	
21	LOWER GUIDE, STEEL	1	05010-2169	
22	UPPER GUIDE, STEEL	1	05010-2151	
23	PACKING ADJ., ASTM B-16	1	05010-3639	
24	LANTERN GLAND, DELRIN	1	05011-8041	
25	PACKING, REIN. NITRILE •	4	06000-0387	
26	FLAT PACKING, REIN. NITRILE •	2	06000-0528	
27	O-RING, BUNA-N •	1	06000-0371	
28	PACKING SPACER, DELRIN	2	05010-8646	
29	GASKET, BUNA-N •	1	05010-3662	
30	CAP SCREW, STEEL PLATED	8	05000-1841	
31*	TRIM SET, 1/4" ORIFICE, 17-4PH •	1	06500-1679	
	TRIM SET, 3/8" ORIFICE, 17-4PH •	1	06500-1661	
	TRIM SET, 1/2" ORIFICE, 17-4PH •	1	06500-2107	
	TRIM SET, 3/4" ORIFICE, 17-4PH •	1	06500-1505	
	TRIM SET, 1" ORIFICE, 17-4PH •	1	06500-1497	

*Recommended Spare Part

*Trim set includes seat, plug and o-ring.

Model and Part No.

Size	Model No.	W.P.	Orifice	C _v	Wt.	Part No.
1" NPT	120-DSG-K25	4000	.250	1.5	26 lbs	03007-0007
	120-DSG-K38		.375	3.3		03007-0015
	120-DSG-K50		.500	6.0		03007-0023
	120-DSG-K75		.750	12.0		03007-0031
	120-DSG-K100		1.000	20.0		03007-0049
	150-DSG-K25		.250	1.5	40 lbs	03007-0056
	150-DSG-K38		.375	3.3		03007-0064
	150-DSG-K50		.500	6.0		03007-0072
	150-DSG-K75		.750	12.0		03007-0080
	150-DSG-K100		1.000	20.0		03007-0098
2" NPT	220-DSG-K25	2000	.250	1.5	35 lbs	03006-0008
	220-DSG-K38		.375	3.3		03006-0016
	220-DSG-K50		.500	6.0		03006-0024
	220-DSG-K75		.750	12.0		03006-0032
	220-DSG-K100		1.000	20.0		03006-0040
	250-DSG-K25		.250	1.5	50 lbs	03006-0057
	250-DSG-K38		.375	3.3		03006-0065
	250-DSG-K50		.500	6.0		03006-0073
	250-DSG-K75		.750	12.0		03006-0081
	250-DSG-K100		1.000	20.0		03006-0099



Model and Part No.

Size	Model No.	W.P.	Orifice	C _v	Wt.	Part No.
2" ANSI 150	220-G150-K25	275	.250	1.5	45 lbs	03011-0001
	220-G150-K38		.375	3.3		03011-0019
	220-G150-K50		.500	6.0		03011-0027
	220-G150-K75		.750	12.0		03011-0035
	220-G150-K100		1.000	20.0		03011-0043
	250-G150-K25		.250	1.5	60 lbs	03011-0050
	250-G150-K38		.375	3.3		03011-0068
	250-G150-K50		.500	6.0		03011-0076
	250-G150-K75		.750	12.0		03011-0084
	250-G150-K100		1.000	20.0		03011-0092
2" ANSI 300	220-G300-K25	720	.250	1.5	50 lbs	03011-0100
	220-G300-K38		.375	3.3		03011-0118
	220-G300-K50		.500	6.0		03011-0126
	220-G300-K75		.750	12.0		03011-0134
	220-G300-K100		1.000	20.0		03011-0142
	250-G300-K25		.250	1.5	65 lbs	03011-0159
	250-G300-K38		.375	3.3		03011-0167
	250-G300-K50		.500	6.0		03011-0175
	250-G300-K75		.750	12.0		03011-0183
	250-G300-K100		1.000	20.0		03011-0191
2" ANSI 600	250-G600-K25	1440	.250	1.5	70 lbs	03011-0209
	250-G600-K38		.375	3.3		03011-0217
	250-G600-K50		.500	6.0		03011-0225
	250-G600-K75		.750	12.0		03011-0233
	250-G600-K100		1.000	20.0		03011-0241

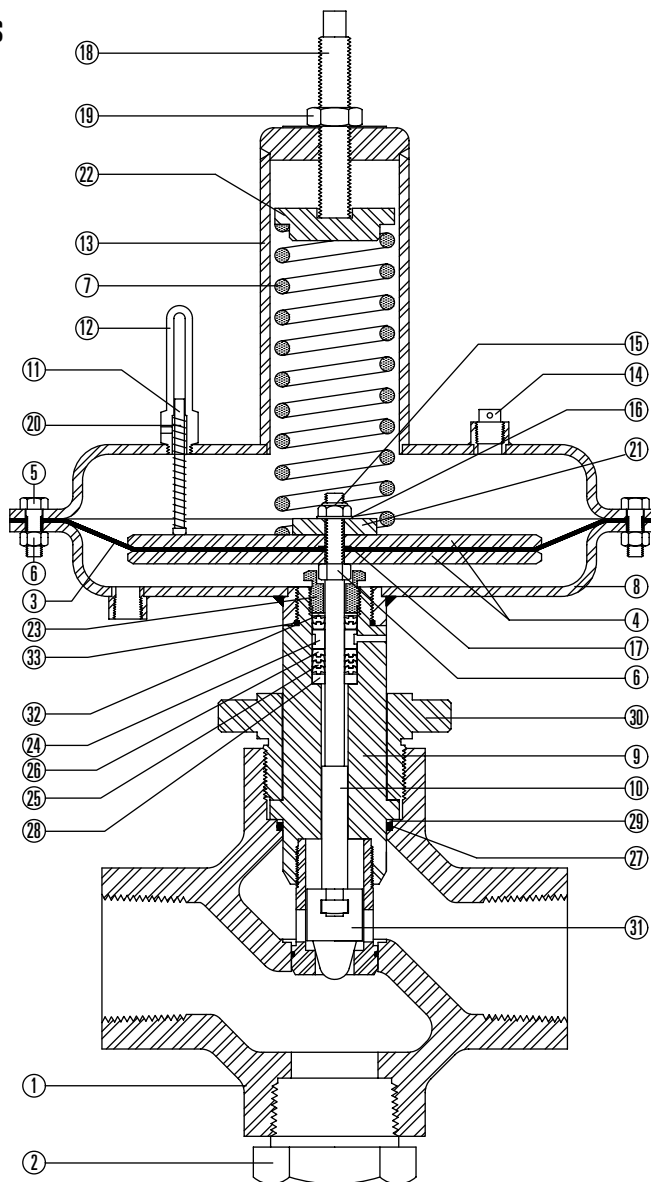
4040 Two-Way Valve, High Pressure "K" Trim

Parts List Series 4040 w/Hammer Union Topworks

Item	Description	Qty.	Part No.
1	BODY, 2" "T", STEEL WCB	1	05011-6540
	BODY, 2" "Y", STEEL WCB	1	05011-3620
2	PLUG, "T" VALVES ONLY, STEEL	1	06000-3837
	PLUG, "Y" VALVES ONLY, STEEL	2	06000-0478
3	DIAPHRAGM, NYLON RENF. NITRILE •	1	06000-0049
4	DIAPH. PLATE, ASTM A-569	2	05010-0411
5	CAP SCREW, ASTM A-307 GR.B	16	05000-1841
6	HEX NUT, ASTM A-307 GR.B	17	05000-2104
7	SPRING, ASTM A-401	1	05010-5063
8	LOWER CASE, ASTM A-569	1	06500-0358
9	DIA. SUPPORT, ASTM A-108	1	05010-9602
10	STEM, ASTM A-276 TY.316	1	05010-9594
11	PIN, INDICATOR, ABS PLASTIC	1	05010-5378
12	GLASS IND. POLYCARBONATE	1	06000-4074
13	UPPER CASE, ASTM A-569	1	06500-0051
14	BREATHER, HPE	1	05011-1640
15	NY-LOC NUT, ASTM A-307 GR.B	1	05000-2997
16	LOCK WASHER, STEEL	1	06000-0403
17	THREAD SEAL, STEEL/BUNA-N •	1	06000-0395
18	ADJ. SCREW, ASTM A-307 GR.B	1	05010-3407
19	JAM NUT, ASTM A-307 GR.B	1	05000-2070
20	SPRING, ASTM A-313	1	05010-2888
21	LOWER GUIDE, ASTM A-108GR.1213	1	05010-2169
22	UPPER GUIDE, ASTM A-582 TY.303	1	05010-2151
23	PACKING ADJ., ASTM A-582 TY.303	1	05010-2813
24	GLAND, LANTERN, DELRIN	1	05010-3324
25	PACKING, REIN.NITRILE •	4	06000-0411
26	PACKING, FLAT, REIN.NITRILE •	2	06000-0767
27	O-RING, BUNA-N •	1	05000-0512
28	PACKING SPACER, DELRIN	1	05010-8091
29	BACK UP RING, TEFLON® •	1	05000-2955
30	HAMMER UNION, ASTM A-216/WCB	1	06500-0341
31*	TRIM SET, 1/4" ORIFICE, 17-4PH •	1	06500-1679
	TRIM SET, 3/8" ORIFICE, 17-4PH •	1	06500-1661
	TRIM SET, 1/2" ORIFICE, 17-4PH •	1	06500-2107
	TRIM SET, 3/4" ORIFICE, 17-4PH •	1	06500-1505
	TRIM SET, 1" ORIFICE, 17-4PH •	1	06500-1497
32	SPACER, DELRIN	1	05010-2805
33	O-RING, BUNA-N •	1	05000-0280

•Recommended Spare Part

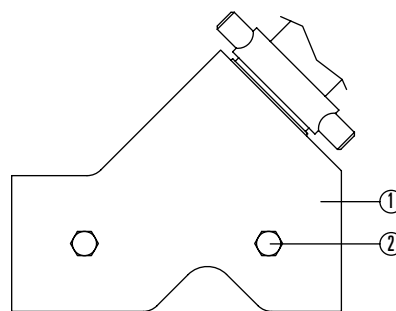
*Trim set includes seat, plug and o-ring.



2" T VALVE

Model and Part No.

Size	Model No.	W.P.	Orifice	C _v	Wt.	Part No.
2"	250-DST-K25	6000	.250	1.5	80 lbs	03012-0000
	250-DST-K38		.375	3.3		03012-0018
	250-DST-K50		.500	6.0		03012-0026
	250-DST-K75		.750	12.0		03012-0034
	250-DST-K100		1.000	20.0		03012-0042
	250-DSY-K25		.250	1.5		70 lbs
	250-DSY-K38	.375	3.3	03009-0013		
	250-DSY-K50	.500	6.0	03009-0021		
	250-DSY-K75	.750	12.0	03009-0039		
	250-DSY-K100	1.000	20.0	03009-0047		



2" Y BODY