

## W861 Hermetically Sealed Level Control

### Application

The Model W861 Hermetically Sealed Level Control is a side mounted float type liquid level control. This unit is used as a high or low level control. Also, can be used to sound alarms or operate control equipment.

### Features

- Corrosion Proof: All 316 Stainless Steel wetted parts.
- Adjustments: Nothing to adjust or get out of calibration.
- Hermetically Sealed Switch.
- Replacement Switch Capsule: Can easily be changed in field.
- Explosion Proof: CSA APPROVED Class I, Groups A, B, C & D, Class II Groups E, F, & G

### Operation

As the liquid in the vessel rises, lifting the float, a permanent magnet (weld sealed inside the arm) is moved downward toward the hermetically sealed reed switch inside the housing body causing magnetic actuation of the switch.

### Specifications

Minimum Specific Gravity .....	0.45
Operating Pressure Rating .....	1500 psig
Float Material .....	316 Stainless Steel
Temperature Limit .....	250°F
Level Differential .....	Approx. 1"
Electrical Connection .....	1/2" Female Pipe Thread
Switch Rating	
Contact .....	SPST
Voltage .....	120 VAC or 120 VDC Max.
Current .....	3 Amp in RUSH Max.
Power .....	100 VA Max.

### Determining the Model Number

Example given: Standard Model W861-S15 Float Control with, SPST Hermetically Sealed Switch, 1 1/2" NPT 316 S.S. Vessel Connection and 316 S.S. Float, Arm and Pivot for Internal Vessel Mounting with Pressure Up to 1500 psi.

#### MODEL W861-S 15

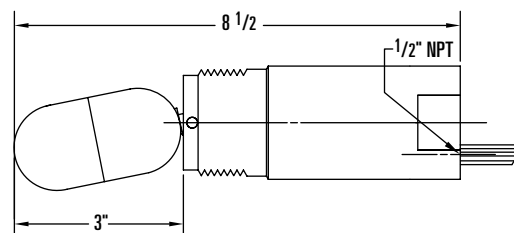
Connection	Size
S • Thread NPT	15 • 1 1/2"
F • Flange*	20 • 2"

\*Specify size & ANSI Class when ordering.

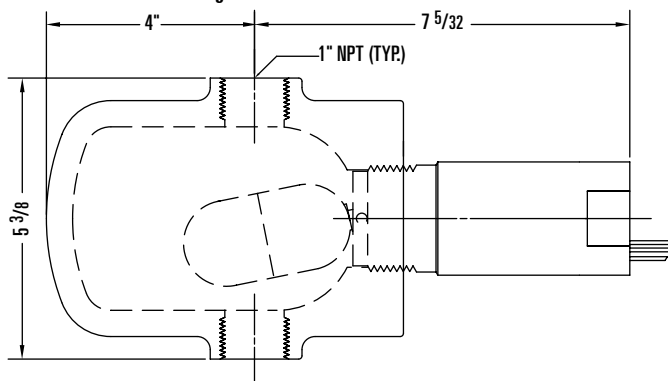


### Dimensional Data

W861 Std. 1 1/2" NPT Or 2" NPT



W861 With External Cage



### Parts List

Item	Description	Qty.	Part No.	
			1 1/2" NPT	2" NPT
1	BODY, ASTM A-276 TY.316	1	30112	30004
2	FLOAT, 316 STAINLESS STEEL	1	10321	10321
3	ARM, ASTM A-276 TY.316	1	20367	20367
4	PIVOT PIN, 316 STAINLESS STEEL	1	20368	20347
5	SPACER, 316 STAINLESS STEEL	2	20369	20348
6	SWITCH, SPST	1	20350	20350
7	FOAM SPACER	1	10555	10555
8	GROMMET, NEOPRENE	1	10322	10322
9*	NAME PLATE	1	10320	10320

\*Not Shown

